

# A.C.L.C. NEWSLETTER

January to March 2025

VOL. 35, ISSUE 1

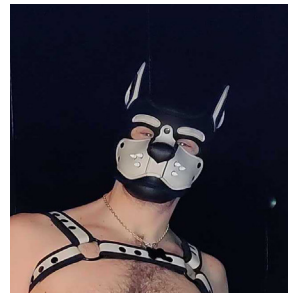
## IN THIS ISSUE



**President's  
Letter**



**1st Quarter  
financial report**



**Education:  
The Pup  
Perspective**



**Catch the Patch**

## President's Letter

Greetings, everyone.

You know what? Spring's coming. It still a little chilly and the rain still occasionally intrudes on our time outdoors, but we're in the home stretch. Soon we'll be gadding about with all of our friends (it seems like I haven't gadded for years!) And with the advent of warmer weather, we're making plans to do what ACLC does best, events!

First off, we have ACLC's Beer Bust at the San Francisco Eagle on Sunday March 16th. Themed The Sharing of the Shenanigans (it's the day before Saint Patrick's Day! What were you were expecting, a Wuthering Heights theme?)



Next, we have the Dog and Pony Show, produced by our own Pup Loadz and Pony. This will be produced at the Bolt on Saturday, April 12th from 3pm to 7pm. There'll be a dog pound, a Best Pet Run Show, and Fist the Pony, which I am leaving up to your imagination. You should come check it out and see what kind of mayhem the critters can cause.

After that, we've got an event coming up for Sacramento Pride. Since there will be another newsletter before then (There will! Quit looking at me like that!), we'll let things develop, but watch this space.

[continued on Page 6](#)

# Catch the Patch

## ACLC Members Out and About

### Oh My Kinky Cupid

February 8, 2025



## American Brotherhood Weekend

February 28 - March 2, 2005



# The Pup Perspective

by Loadz

Pup play has deep roots in the leather community, where the structured dynamic of the leather slave dog tradition shaped much of its foundation. Originally, pup play emerged as an extension of the master/slave dynamic in leather culture, with the “slave dog” embodying obedience, service, and primal instincts under the guidance of a dominant handler. These early expressions of pup play often involved a strong sense of hierarchy, discipline, and protocol, creating a framework for traditional pup play.



As pup play evolved, it began to incorporate elements of playfulness and spontaneity, transforming into a more diverse practice that appeals to a wide range of individuals. While some continue to engage in highly structured, protocol-driven dynamics rooted in its leather origins, others focus on entering a headspace centered on joy, play, and living fully in the moment. This openness to interpretation allows pup play to adapt to the needs of its participants, making it an inherently inclusive practice.

Pet play, on the other hand, encompasses a broader range of animal personas and role-playing dynamics. While pup play focuses specifically on the headspace, behaviors, and experiences of human pups, pet play can include personas such as cats, foxes, ponies, and even mythical creatures. The motivations for engaging in pet play are equally varied—some participants enjoy embodying the personality traits of their chosen animal, while others explore it as a form of escape, relaxation, or creative expression. Pet play often lacks the hierarchical structures that some associate with traditional pup play, favoring instead a looser, more flexible approach to the roles and relationships involved.

Despite their differences, pup play and pet play are not in opposition. Pet play, with its broader embrace of animal personas, complements rather than competes with pup play. Both practices celebrate role-playing as a form of self-expression, each offering participants a unique way to connect with themselves and others. Respecting these diverse approaches strengthens the bonds within the community and fosters an environment of acceptance and inclusivity. After all, pup play thrives when it nurtures connection, curiosity, and shared joy.

# Treasurer's Report

October-December 2024

Starting Balance	7,760.01
Income	769.43
Expenses	1,048.70
Ending Balance	7,480.74

## Don't Forget: Dues Are Due!

Annual Membership dues are currently due. Full membership is \$25 per year and affiliate membership is \$10 per year.

Dues can be paid through:

- Venmo (go to [www.venmo.com/u/ACLeather](https://www.venmo.com/u/ACLeather))
- Paypal (go to [www.paypal.com](https://www.paypal.com) and search "Alameda County Leather Corps")
- Use one of the QR Codes below
- Send a check to

ACLC  
P.O. Box 410237  
San Francisco, CA 94141-0237



@ACLeather



**venmo**



# ALTA CALIFORNIA LEATHER CORPS

PRESENTS

## Sharin



## the Shenanigans Beer Bust



Sunday, March, 16th 2025

3pm - 7pm

\$20 beverage bust including meal

\$5.00 for meal only

[www.acleather.org](http://www.acleather.org)



# 398 12th STREET

## President's Letter (continued)

These upcoming events do lend themselves to one other thing I want to encourage everyone to be a part of: The Events Committee. We've got a lot of stuff cooking and we'd love to have your input. The committee meets monthly via Zoom and the meetings are announced via the ACLC Facebook group. The next meeting is March 5th at 6:30 pm. We'd love to see you there and hear what you think about our plans for future events.

I do want to turn to more somber things for a moment. Recently ACLC experienced two losses from among our former members. Victoria Gomez, Ms. Alameda Count Leather 2008, and Mike Trutner both passed away. Both were active with ACLC starting in the early- to mid-2000s. On behalf of the Board, I would like to express our sorrow at losing our brother and sister. Let their memory be a beacon for their families, friends, and ACLC members.

In closing, I want to remind everyone that ACLC is a club for YOU! We want to be a place where everyone, member or not, feels happy and comfortable in their identity. We stand with our trans and BIPOC community members, whether they are members of ACLC or not.

Cheers!  
Andrew  
aka Bootdog

## ACLC Board of Directors



**President**  
Andrew Johnson

**Vice President**  
Jeffrey Wayne

**Treasurer**  
Nyna Kaiser

**Secretary**  
Joan Norry

**Member at Large**  
Pup Loadz